

Anti-PD-L2 hIgG1 Antibody(Hz25G4-1.1)

Product information

GM-79817AB-10	10 µg
GM-79817AB-100	100 µg
GM-79817AB-1000	1 mg

Antibody Information

Species Reactivity	Human
Clone	Hz25G4-1.1
Source/Isotype	Human IgG1, κ
Application	Flow cytometry
Specificity	Detects PD-L2
Gene	PD-L2
Other Names	B7DC, Btdc, CD273, PDCD1LG2, PDCD1L2, PDL2, bA574F11.2
Gene ID	80380
Background	PDCD1LG2 is an immune checkpoint receptor ligand which plays a role in negative regulation of the adaptive immune response. PD-L2 is one of two known ligands for Programmed cell death protein 1 (PD-1). PD-L2 binding to PD-1 can activate pathways inhibiting TCR/BCR-mediated immune cell activation. PD-L2 plays an important role in immune tolerance and autoimmunity. Blocking PD-L2 has been shown to exacerbate experimental autoimmune encephalomyelitis. Unlike PD-L1, PD-L2 has been shown activate the immune system. PD-L2 triggers IL-12 production in murine dendritic cells leading to T cell activation.
Storage	Store at 2-8°C short term (1-2 weeks).Store at ≤ -20°C long term. Avoid repeated freeze-thaw.
Formulation	Phosphate-buffered solution, pH 7.2.
Endotoxin	< 1 EU/mg, determined by LAL gel clotting assay

Data Examples

Flow cytometry

The recommended usage range is 0.5-4 μg per test. H_PDCD1LG2(PDL2) CHO-K1 Cell Line (Catalog # GM-C19936) was stained with Anti-PD-L2 hIgG1 Antibody(Hz25G4-1.1) (Catalog # GM-79817AB) or isotype control antibody, followed by anti-Human IgG APC-conjugated Secondary Antibody.

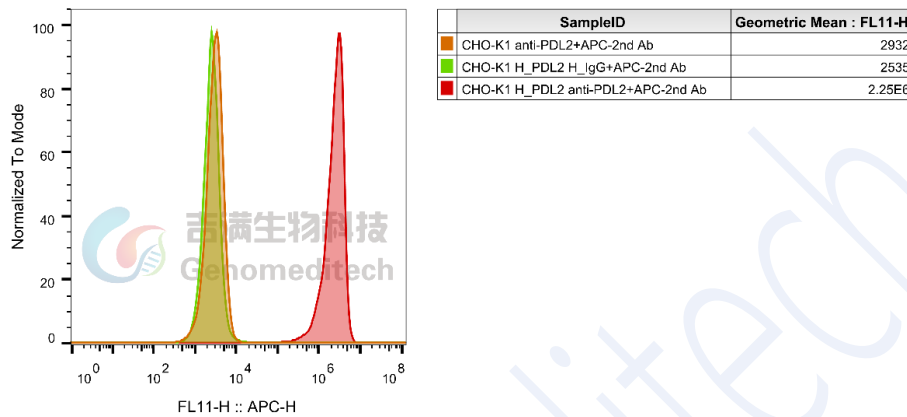


Fig. FACS